

Master Thesis Proposal

Cold-formed steel bolted moment connections



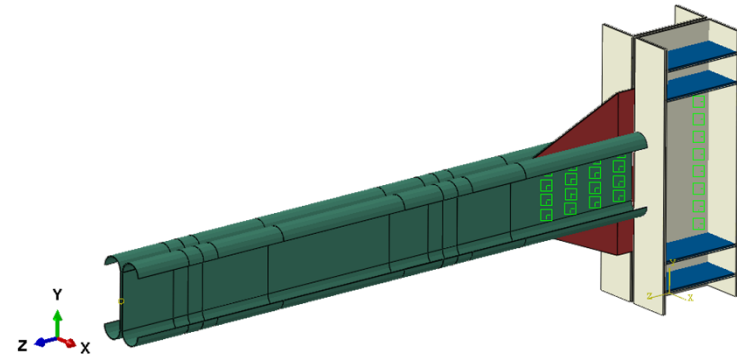
**Politecnico
di Torino**

Contacts:
Prof. Francesco Tondolo
PhD Candidate Ward Alarab Safarani

Cold-formed steel bolted moment connections

Thesis structure:

- Design of Cold-formed steel (CFS) members
- Understanding buckling behavior of CFS connections
- Criteria to evaluate the efficiency of CFS moment resisting connections
- Development of new type of CFS moment resisting joint
- Experimental and Numerical tests on CFS connection
- Evaluation of the performance of the developed CFS connection

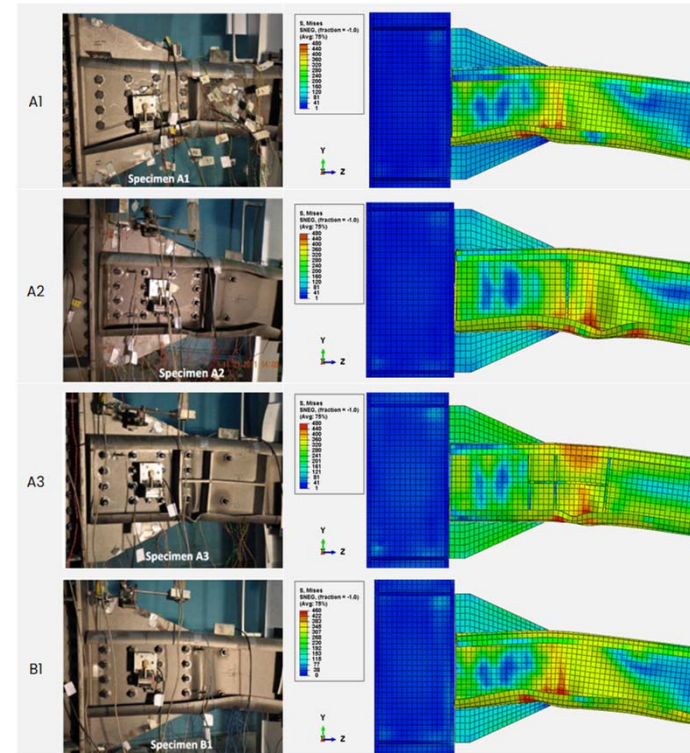


**Politecnico
di Torino**

Cold-formed steel bolted moment connections

Thesis prerequisites:

- Having passed the exam of the course of “The theory and design of steel and composite structures”
- Previous knowledge of structural analysis and design software for steel structures
- Previous experience with ABAQUS is an advantage



Experimental tests available in literature



**Politecnico
di Torino**