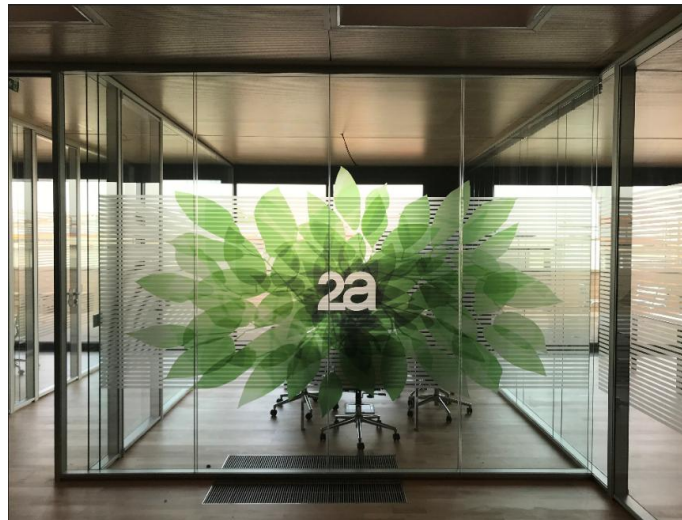


2a S.p.A.



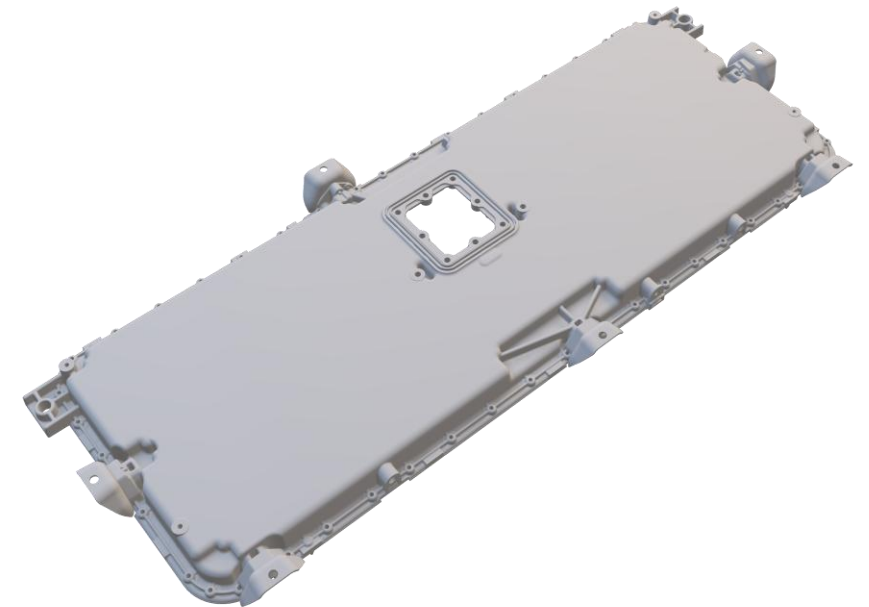
Presentation

Our passion, your business!



NOTIFICATION OF CONFIDENTIALITY

THIS DOCUMENT AND THE INFORMATION IN IT ARE PROVIDED IN CONFIDENCE, FOR THE SOLE PURPOSE OF THE USE BETWEEN THE PARTIES INVOLVED, AND MAY NOT BE DISCLOSED TO ANY THIRD PARTY OR USED FOR ANY OTHER PURPOSE WITHOUT THE EXPRESS WRITTEN PERMISSION OF 2A

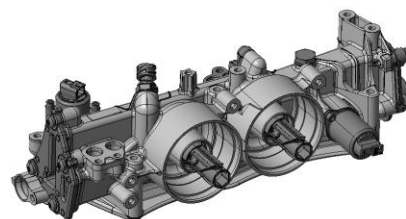


Who we are

Our strategy

Key segments

**Financial
Statements**

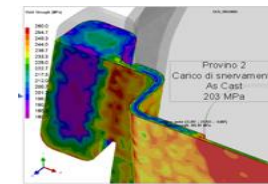
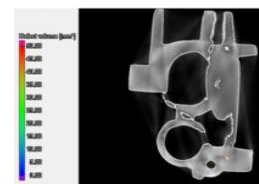
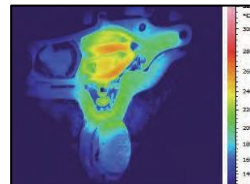
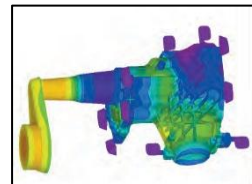
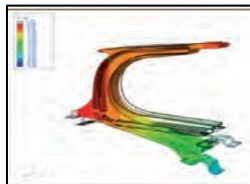




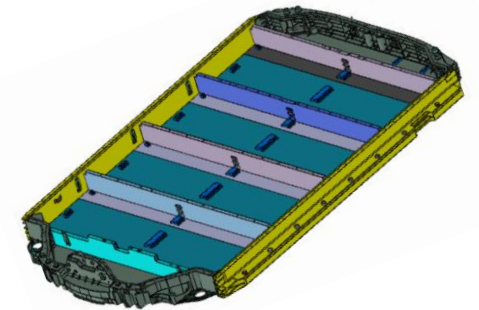
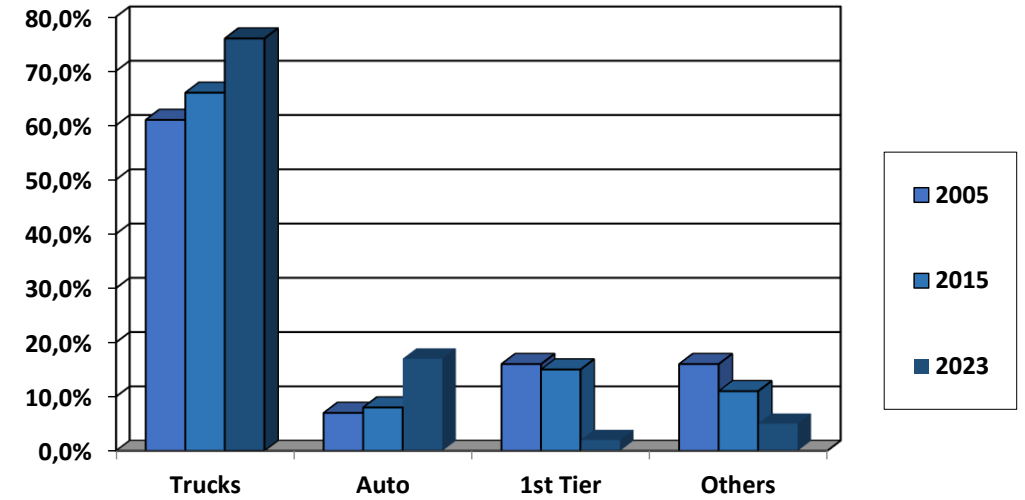
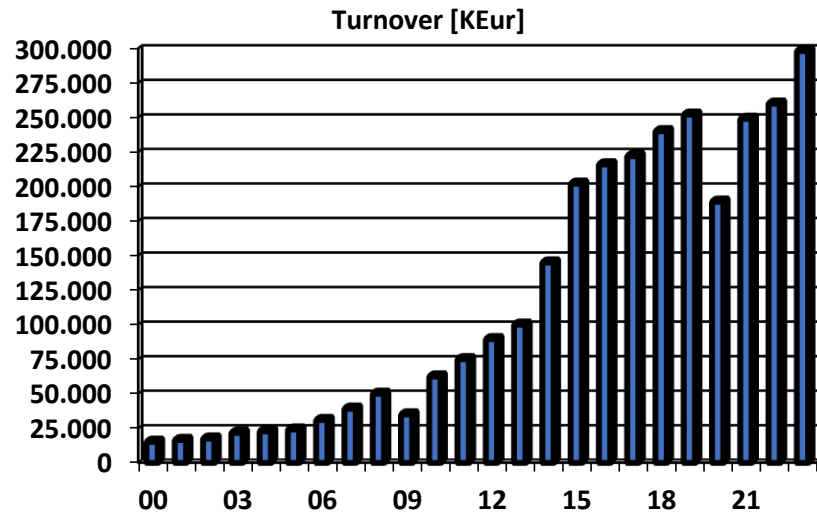
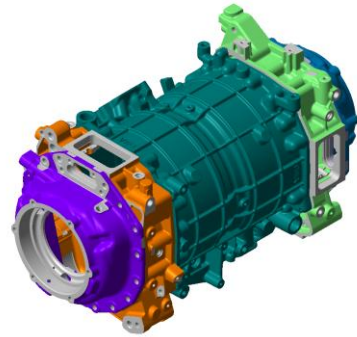
- ❑ 2A is a private owned aluminum global die-casting foundry specialized in the development and production of automotive and industrial components
- ❑ 2A is a complete die-casting partner:
 - 2A delivers pieces from few grams up to the biggest,
 - 2A machines, coats and assembles them
- ❑ 2A head quarters are in Turin (Italy), with plants in China, Italy and USA
- ❑ Records:



- largest Italian HPDC foundry
- largest set of private HPDC cells in Europe (11>2.500Tons)
- foundry capable of producing T6 HPCD parts
- first GIGA HPDC machine installed in Europe at a 1st tier supplier



Who we are: turnover, mirror of our Customer's satisfaction



DAIMLER TRUCKS

FREIGHTLINER

DETROIT DIESEL

VOLVO

RENAULT TRUCKS

Mack TRUCKS

UD TRUCKS

TRATON

SCANIA

NAVISTAR

MAN

CNH INDUSTRIAL

IVECO

GROUP GAZ

STELLANTIS

FIAT

ALFA ROMEO

LANCIA

OPEL

CHRYSLER

MAZDA

Mercedes-Benz

Mercedes-Benz

AMG

GM

VW

BENTLEY

PORSCHE

Audi

LAMBORGHINI

TESLA

DEUTZ

TRELLEBORG

WABCO

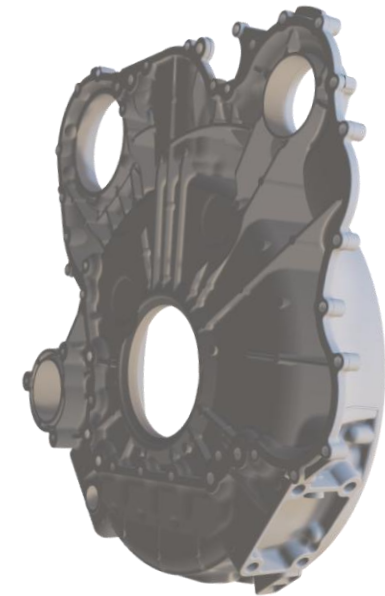
ZF

Danfoss

ERICSSON

DECATHLON

Our strategy





- ❑ Our strategy is to be a 1st tier supplier, focusing on small medium size batches and a strong flexibility
- ❑ We want to be a complete HPDC partner (casting from very small to very large parts)
- ❑ We want to be an innovative HPDC partner, always capable to introduce innovations and capable to offer to co-design support, thanks also to significant R&D investments
- ❑ We want to offer not only the best castings, but also to machine, coat and assemble them, thanks to a mix of internal and external competences and equipment, constantly and updated
- ❑ We want to be considered a global/local, or “glocal” partner
- ❑ We want to be our Customer’s best supplier, also by introducing WCM standards and the respect of the environment



- ❑ We want to be a complete HPDC partner (casting from very small to very large parts)

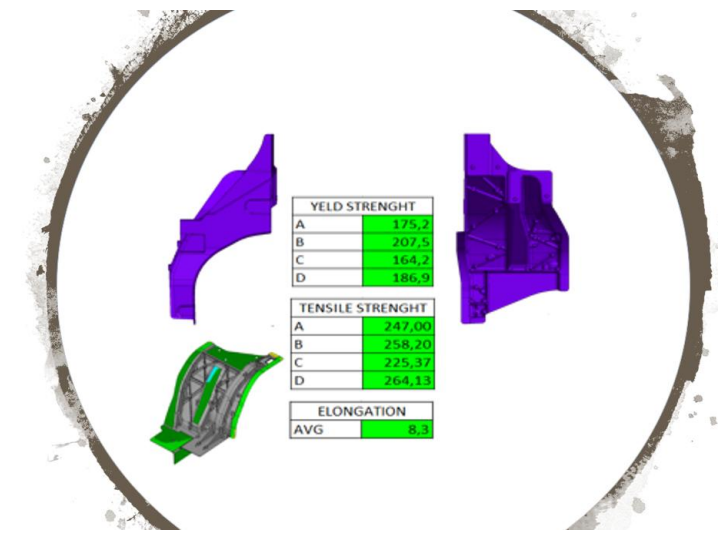
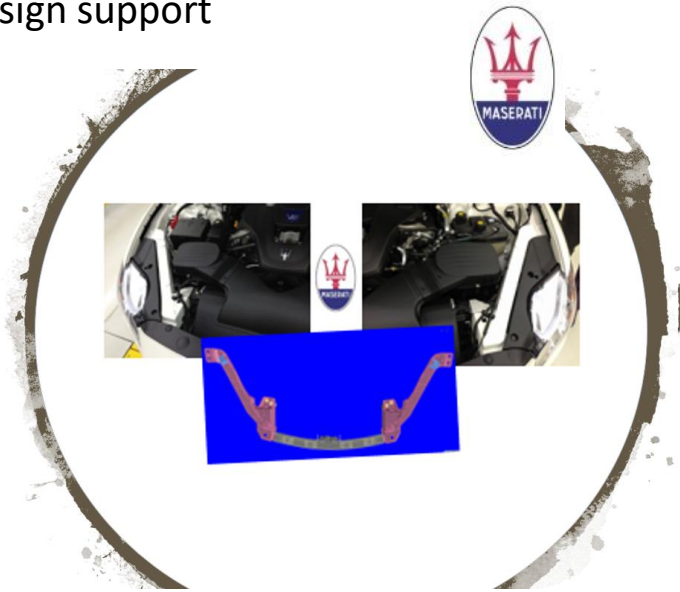


- ❑ We want to offer not only the best castings, but also to machine, coat and assemble them
- ❑ We want to be able to support our Customer with all their requests both in terms of capacity than in terms of implementation speed, thanks to an inhouse/out-source strategy





- We want to be an innovative HPDC partner, always capable to introduce innovations and capable to offer to co-design support



- We signed a strategic partnership program with Rheinfelden (A2.0) in order to study the future of HPDC



- We participates to several research programs with different R&D Centres and Universities.

Chemical Composition	EN AC	VAN	ASTM	ISO2002	JIS	Typical Yield strength	YS1	E/A	HBW	Corrosion Resistance	Density	Young's Modulus	Thermal Conductivity	Linear Expansion	Solidification Range
International Standards*	EN AC	VAN	ASTM	ISO2002	JIS	MPa	MPa	%	500-20	kg/dm³	GPa	W/m.K	°C	°C	
AlSi10MgPb	4039	2340	A336	ADC12	F	240	140	+1	80	good	2,71	70	1,2	0,5-0,8	490-530
AlSi10MgPb	4039		A336	ADC12	F	240	140	+1	80	good	2,67	70	1,2	0,7	500-550
AlSi10MgPb	4039		A336	A336	F	240	140	+1	80	good	2,68	70	1,2	0,8	500-550
AlSi10MgPb	4039	2340	A336	A336	F	240	140	+1	80	average	2,65	70	1,2	0,8	500-550
AlSi10MgPb	4039		A336	A336	F	240	140	+1	80	average	2,65	70	1,2	0,8	500-550
AlSi10MgPb	4039		A336	A336	F	240	140	+1	80	average	2,65	70	1,2	0,8	500-550
AlSi10MgPb	4039		A336	A336	F	240	140	+1	80	average	2,65	70	1,2	0,8	500-550
AlSi10MgPb	4039		A336	A336	F	240	140	+1	80	average	2,65	70	1,2	0,8	500-550
AlSi10MgPb	4039		A336	A336	F	240	140	+1	80	average	2,65	70	1,2	0,8	500-550
AlSi10MgPb	4039		A336	A336	F	240	140	+1	80	average	2,65	70	1,2	0,8	500-550
AlSi10MgPb	4039		A336	A336	F	240	140	+1	80	average	2,65	70	1,2	0,8	500-550

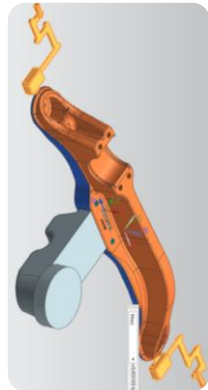
Innovate: be disruptive and think different!



Hydro Die casting®



Box Die Casting®



Rheometal®



Thin Wall Casting

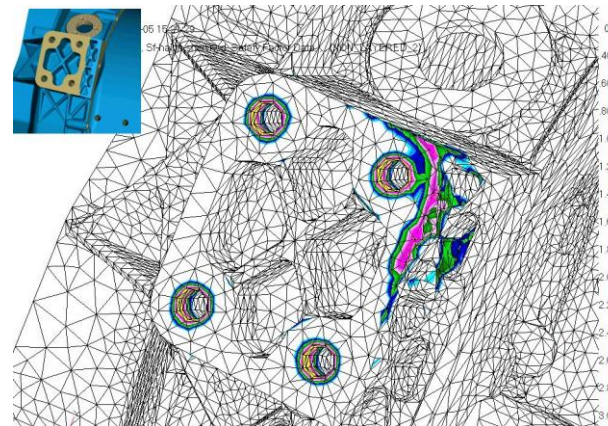
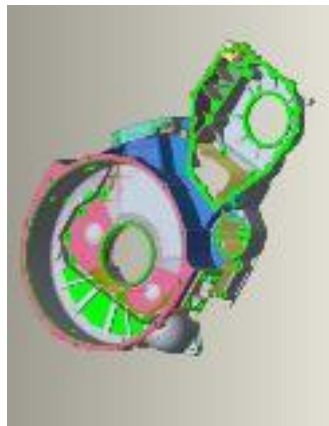
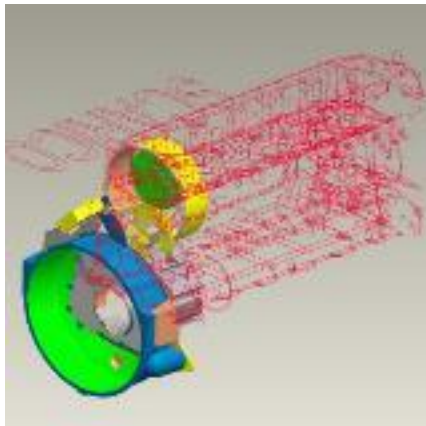
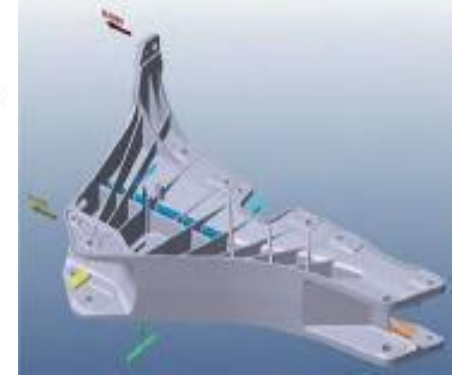
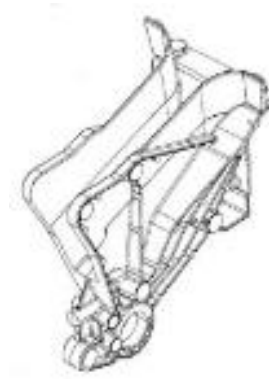
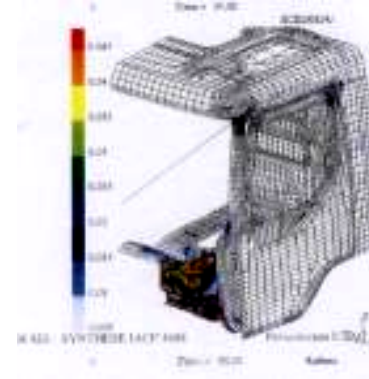
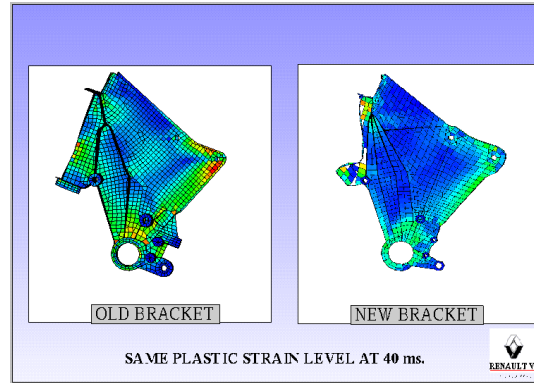
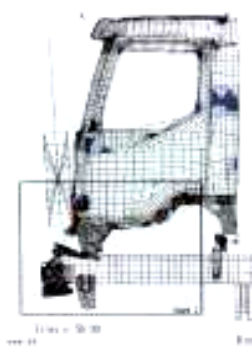


Polymer Casting



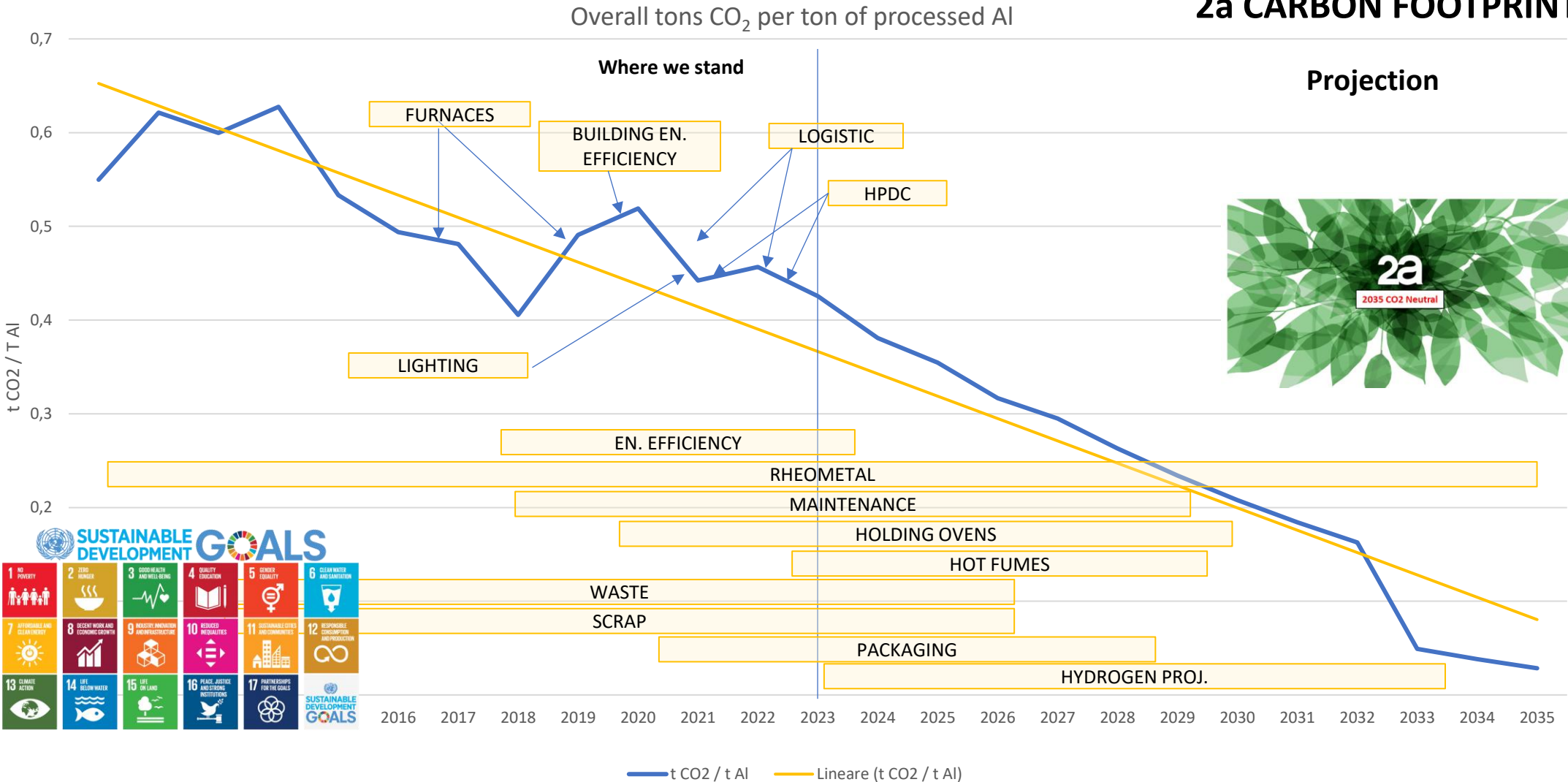
Pipe Casting

□ Co-design examples

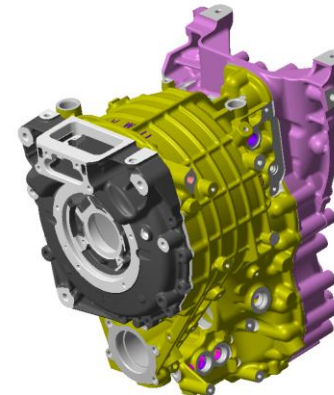
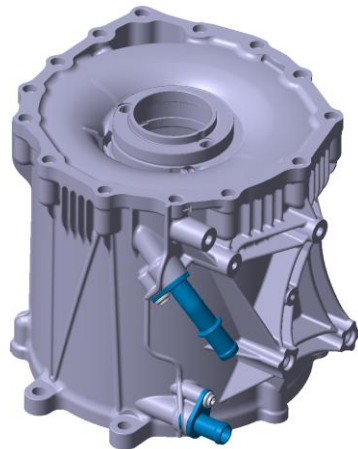




2a CARBON FOOTPRINT

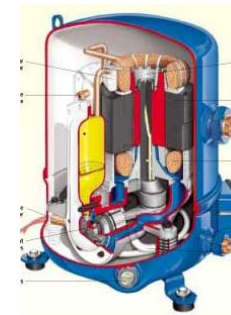
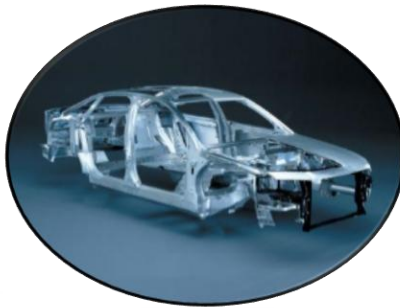
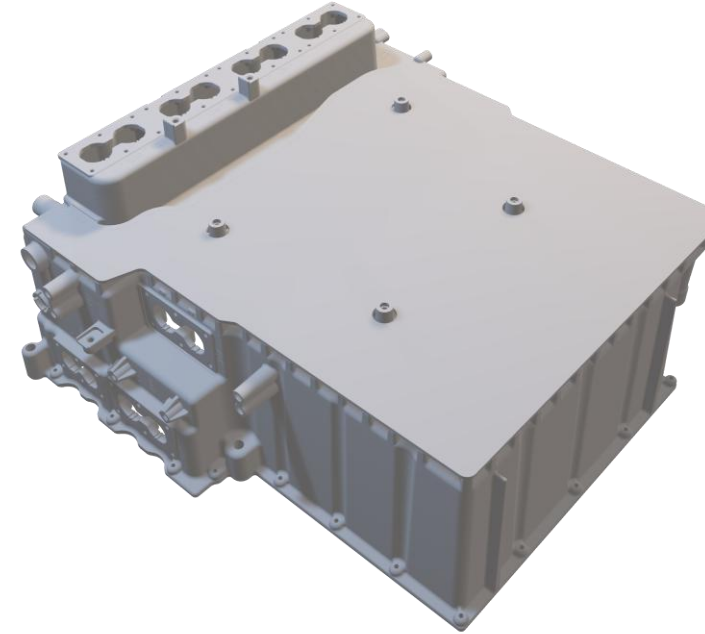


Key segments

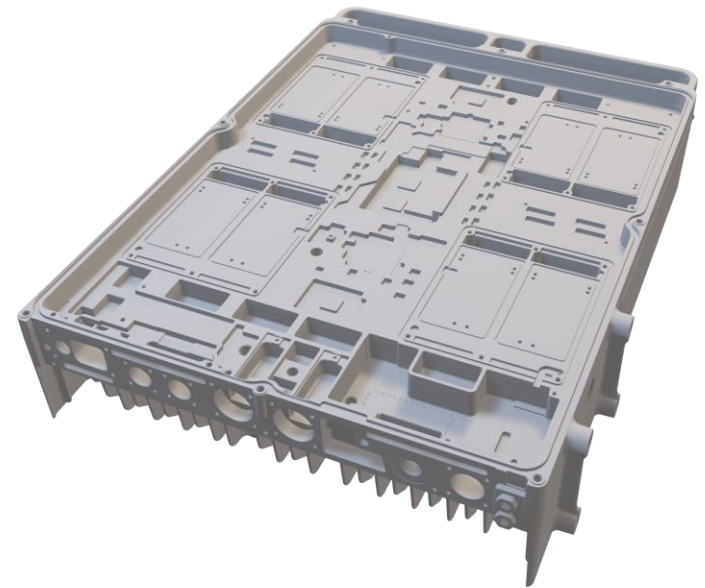




- Powertrain components
- Chassis components
- Structural components
- Assembled functions
- Electronic components
- Leisure time



Financial Statements





- ❑ Private owned
- ❑ 2 digit EBITDA
- ❑ All profits reinvested in new equipment, training and innovation
- ❑ The company is investing approximately 3% of its turnover in R&D
- ❑ The company has received several international recognitions for its R&D activities

